



**MEDVED ROBERT s.p.**

Vojkova 2 a, 5280 Idrija

Tel.: 05 37 22 042

mr.sp@siol.net

[www.turbostarter.com](http://www.turbostarter.com)

## TURBOSTARTER FOR INTERVENTION VEHICLES



The turbostarter is a device that connects intervention vehicles with outside sources of energy (air, electricity). It is designed for intervention vehicles in voluntary and professional firefighter units and for police and military vehicles, which require compressed air in order to function. Since we know that these vehicles are often stationary and since it is not possible to ensure a permanent tightness of the air installation there are decreases of air pressure in the brake system.

Such a vehicle is temporarily incapable to participate in an intervention. The compressing of air in a garage can fill the room with smoke and lead to unnecessary consumption of fuel, car battery strain and engine wear, while increasing the time of driving the vehicle out of the garage by at least four minutes. When vehicles remain stationary for a long time, especially in winter time, there is a danger of a voltage drop in the car batteries. This problem can also be solved by the turbostarter.

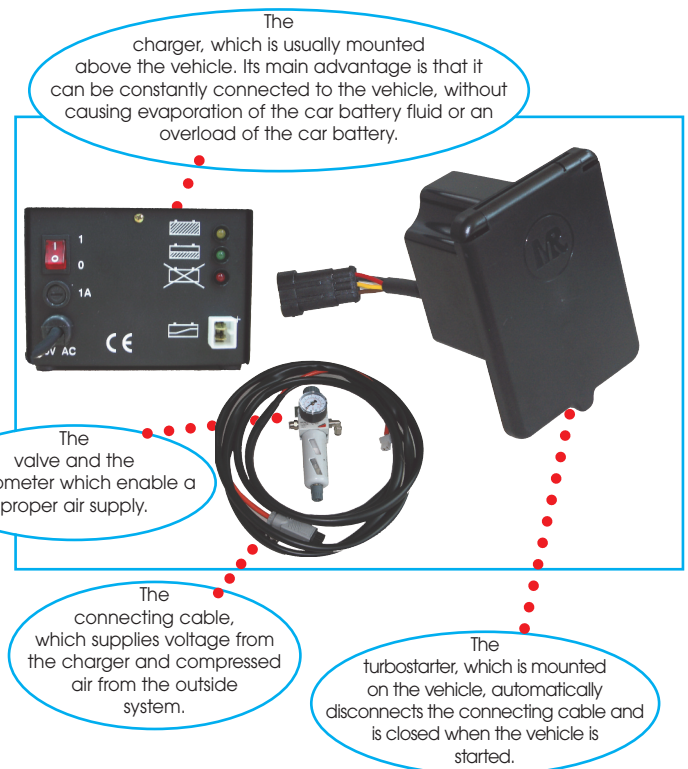




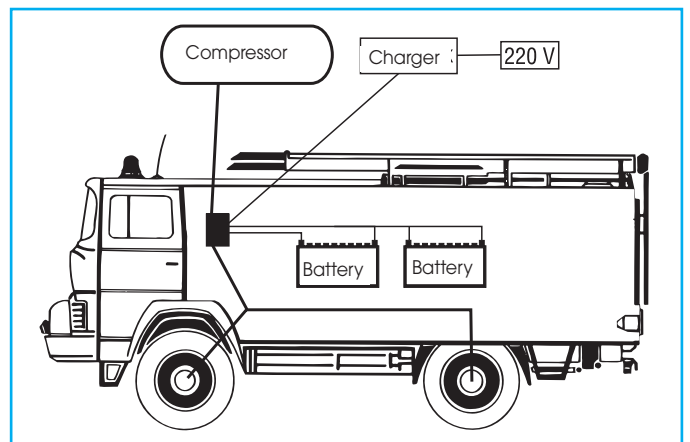
This device aims to contribute to greater efficiency of intervention vehicles and to shorten the time of driving the vehicle out of the garage. The analyses that were carried out have shown that we have succeeded in doing this. We also succeeded in achieving lower fuel consumption, less pollution and a longer life-span of the car batteries. UKW radios, portable lamps and other electrical devices in the vehicle can remain constantly connected.

The vehicle is connected to a source of compressed air and a charger by hoses and electrical cables. The turbostarter will help you avoid problems when driving the intervention vehicles out of the garage. The device is mounted on the cab of the vehicle, on an easily accessible and visible place. It is made of non-corrodible materials.

When starting the engine the device will ensure that the vehicle is automatically disconnected from the outside sources of energy. The connecting hose will be moved to an appropriate place out of the vehicle's maneuver space, the cover on the connecting socket is automatically closed. When driving the vehicle back into the garage you can connect it to the turbostarter in a quick and simple manner.



A schematic drawing of the elements and their installation.



The device has been patented at the Ministry of Science and Technology Industrial Property Protection Office of the Republic of Slovenia under number: Pn 9600302